

THIS DRAWING SHALL NOT BE USED FOR CONSTRUCTION UNLESS A PROFESSIONAL SEAL AND SIGNATURE ARE ON THE DRAWING

THIS PLAN IS APPROVED ONLY FOR WORK AS INDICATED ON THE APPLICATION SPECIFICATION SHEET. ALL OTHER MATTERS SHOWN ARE NOT TO BE RELIED UPON, OR TO BE CONSIDERED AS EITHER BEING APPROVED OR IN ACCORDANCE WITH APPLICABLE CODES.

DOB STAMP & SIGNATURES

DOB SCAN

FEMA TEMPORARY TRANSPORTABLE HOUSING UNITS ACCESSIBLE LAYOUTS FOR RV BASED DISASTER RELIEF HOUSING

Rev 03: September 30 2022

PROJECT NAME:
FEMA TEMPORARY HOUSING UNITS

MARK	DATE	DESCRIPTION

PROJECT NO: PROJECT CODE/NUMBER
FILE: dg
DRAWN BY: wef
CHECKED BY: wef

COVER PAGE

STAMP:

G-000

THIS DRAWING SHALL NOT BE USED FOR CONSTRUCTION UNLESS A PROFESSIONAL SEAL AND SIGNATURE ARE ON THE DRAWING

THIS PLAN IS APPROVED ONLY FOR WORK AS INDICATED ON THE APPLICATION SPECIFICATION SHEET. ALL OTHER MATTERS SHOWN ARE NOT TO BE RELIED UPON, OR TO BE CONSIDERED AS EITHER BEING APPROVED OR IN ACCORDANCE WITH APPLICABLE CODES.

DOB STAMP & SIGNATURES

DOB SCAN

GENERAL NOTES:

Accessibility Codes Used - Most Stringent Criteria Applies

- Architectural Barriers Act (ABA) Accessibility Standards
- Uniform Federal Accessibility Standards (UFAS)

Electric

- Mounting Height.
 - Outlets and switches must be mounted no less than 15 inches AFF, measured to the bottom of the electrical box, and no more than 48 inches AFF, measured to the top of the electrical box. Outlets and switches located over obstructions (e.g. kitchen countertops) must comply with the following:
 - Where a side approach is provided at obstructions greater than 10 inches in depth, outlets and switches must be mounted no more than 46 inches AFF, measured to the top of the box. Reaching over obstructions greater than 34 inches in height and 24 inches in depth is not permitted; and
 - Where a front approach, including knee and toe clearance, is provided at obstructions greater than 20 inches in depth, outlets and switches are mounted no more than 44 inches AFF, measured to the top of the box. Reaching over obstructions greater than 25 inches in depth is not permitted.
- Location:
 - Bedrooms: A means to control at least once source of bedroom lighting from the bed must be provided.
- Thermostats
 - Thermostats must be mounted fully below 48 inches AFF.

Windows

- All operable windows must comply with UFAS Section 4.34.2(9).
- The lock must be mounted no more than 54 inches AFF;
- If the reach depth to the lock exceeds 10 inches, the lock must be mounted no more than 46 inches AFF.
- The lock requires no pinching, twisting, or grasping to operate; and
- The lock requires no more than 5 pounds of force to operate.
- Be mindful that window blinds (wands and pull strings) are also subject to the criteria provided above.

Thresholds and Level Changes

- Thresholds and level changes along the accessible route cannot exceed ½ inch in height with a bevel not exceeding 1:2 and unveled level changes cannot exceed ¼ inch.
- The threshold at roll-in showers cannot exceed ½ inch with a bevel not exceeding 1:2 and unveled level changes cannot exceed ¼ inch. The threshold at transfer showers cannot exceed ½ inch. See ABAAS Section 608.7.

Doors

- Pocket Doors. Pocket doors shown comply with the following when in the fully open position:
 - A minimum clear opening width of 32 inches is provided.
 - Hardware is exposed and usable from both sides of the door.
- Main Entry Door. The bottom 10 inches of the push side of the door must be smooth and free of obstructions for the full width of the door.

Bathrooms

- Hand Shower Hose. The hand shower must have a hose no less than 60 inches in length. The hand shower must be equipped with a non positive shut off.
- Bathtub Seat. Top of bathtub seats must be mounted 17-19 inches AFF. The depth of the removable seat must be 15-16 inches.
- Shower Seats. Shower seats must comply with UFAS Figure 36.
- Water Closet flush controls must be installed on the open side of the fixture.

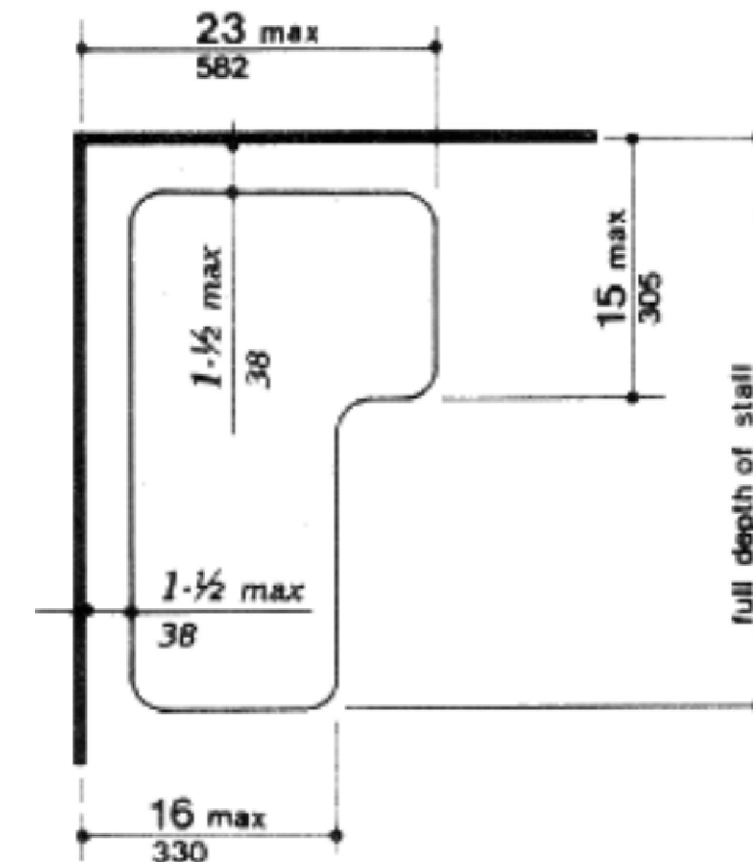
Kitchens

- Cabinet shelving must be full depth.
- At least 50% of shelf space for all storage in kitchens must be mounted above 15 inches AFF and below 48 inches AFF.

Furniture

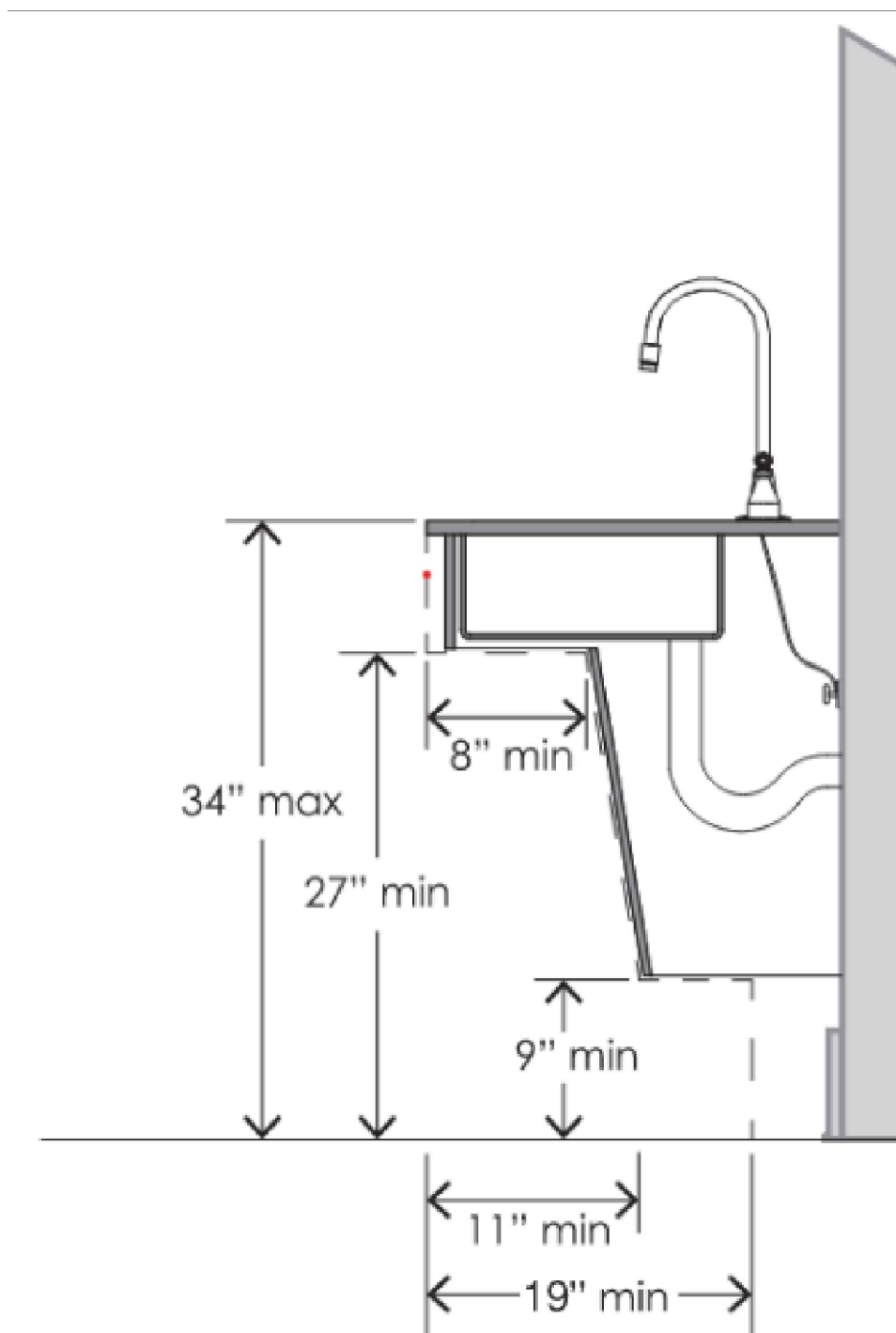
- Where bedrooms that are less than 70 square feet, furniture supplied with the unit cannot overlap the accessible route, maneuvering clearances at doors, and turning space.

ACCESSIBILITY DIAGRAMS :



1 SHOWER SEAT: UFAS Figure 36

SCALE = NTS



2 Knee and toe clearance below kitchen sinks

SCALE = NTS

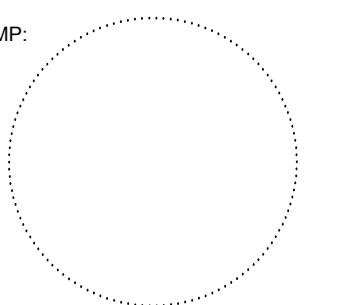
PROJECT NAME: FEMA TEMPORARY HOUSING UNITS

MARK	DATE	DESCRIPTION

PROJECT NO: PROJECT CODE/NUMBER
 FILE: dg
 DRAWN BY: wef
 CHECKED BY: wef

GENERAL NOTES

STAMP:



G-001

THIS DRAWING SHALL NOT BE USED FOR CONSTRUCTION UNLESS A PROFESSIONAL SEAL AND SIGNATURE ARE ON THE DRAWING

THIS PLAN IS APPROVED ONLY FOR WORK AS INDICATED ON THE APPLICATION SPECIFICATION SHEET. ALL OTHER MATTERS SHOWN ARE NOT TO BE RELIED UPON, OR TO BE CONSIDERED AS EITHER BEING APPROVED OR IN ACCORDANCE WITH APPLICABLE CODES.

DOB STAMP & SIGNATURES

DOB SCAN

GENERAL NOTES:

REFER TO A-104 - A106 FOR BATHROOM LAYOUT DIMENSIONS

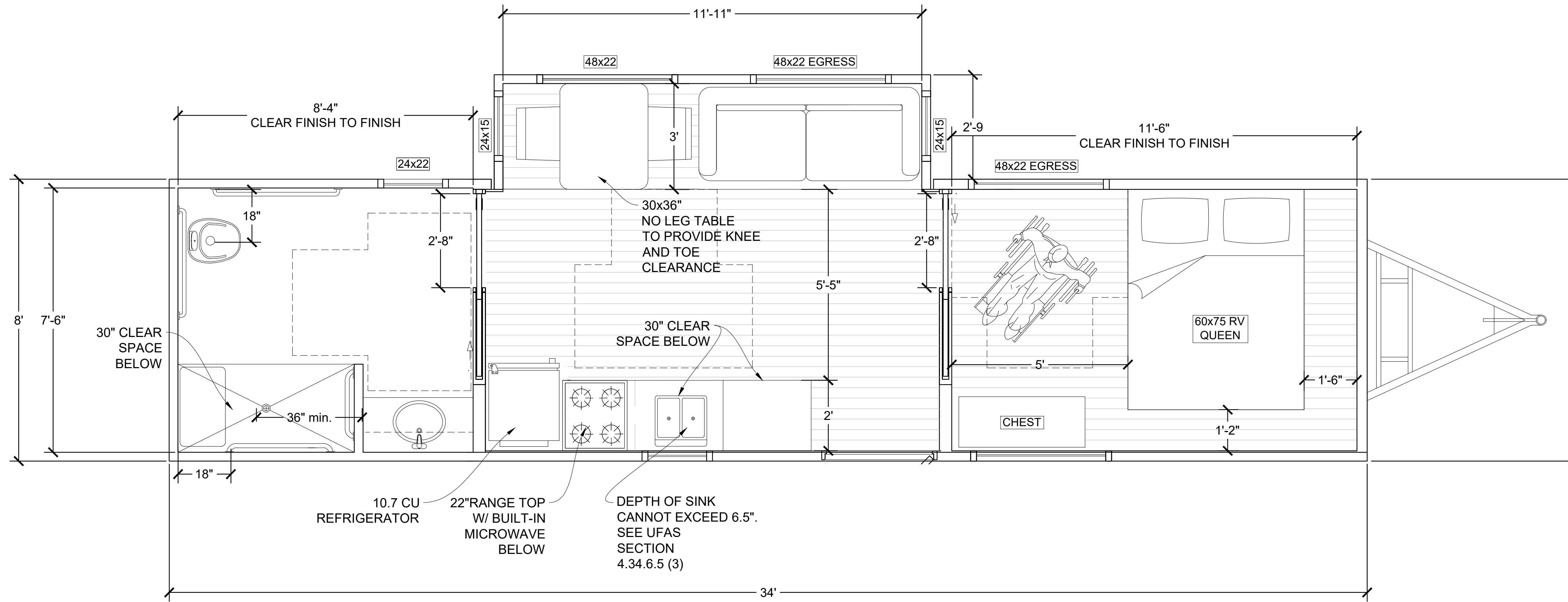
REFER TO A-107-A-109 FOR KITCHEN LAYOUT DIMENSIONS

RV MATTRESSES SIZES ASSUMED ARE AS FOLLOWS:
 RV SHORT QUEEN 60X75 IN
 RV SINGLE 30X75 IN

A MEANS TO CONTROL AT LEAST ONE SOURCE OF BEDROOM LIGHTING FROM THE BED MUST BE PROVIDED. SEE ABA SECTION 809.2.5.3

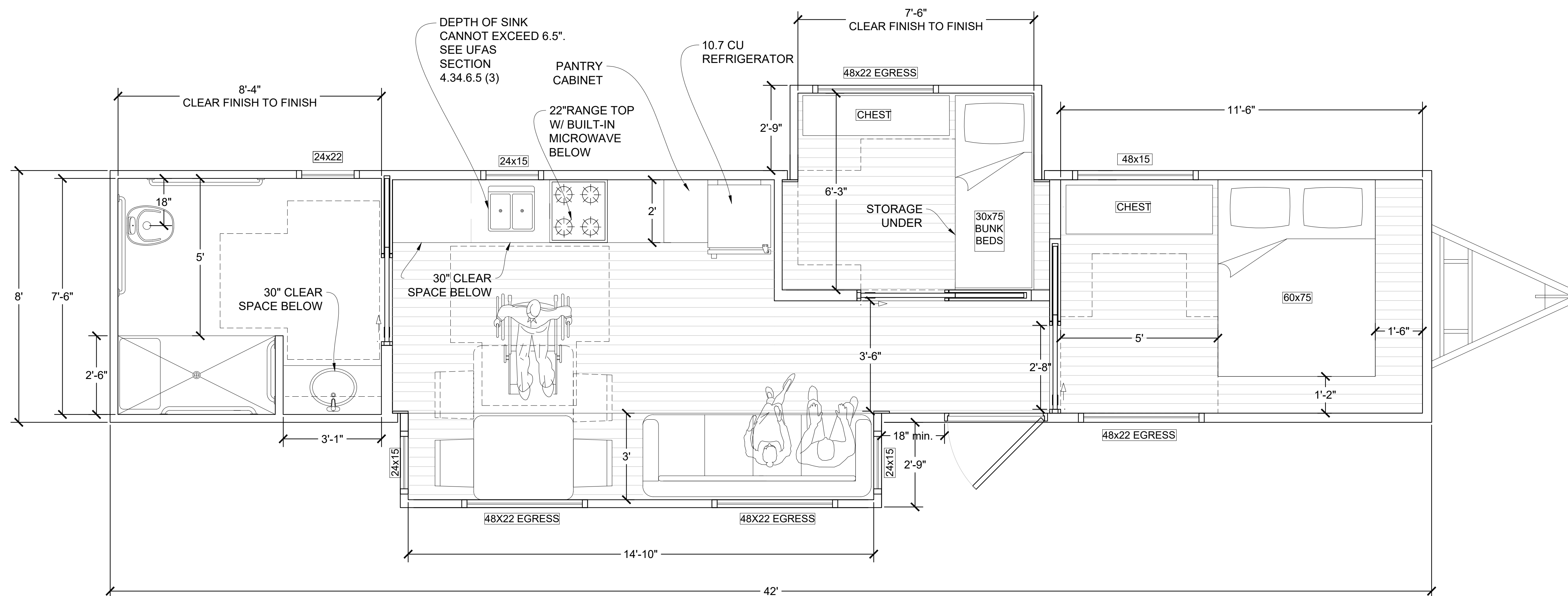
DEPTH OF SINKS CANNOT EXCEED 6.5". SEE UFAS SECTION 4.34.6.5 (3)

NO CARPET CAN BE USED IN THESE UNITS. SEE ABAAS SECTION 809.2.1.2



1 PLAN ONE BEDROOM UNIT (SLEEPS TWO) 96" CEILING

SCALE = 1/2"=1'-0"



2 PLAN TWO BEDROOM UNIT (SLEEPS THREE/FOUR) 96" CEILING

SCALE = 1/2"=1'-0"

FEMA TEMPORARY HOUSING UNITS

MARK	DATE	DESCRIPTION

PROJECT NO: PROJECT CODE/NUMBER
 FILE: dg
 DRAWN BY: wef
 CHECKED BY: wef

PLANS

STAMP:

A-100

THIS DRAWING SHALL NOT BE USED FOR CONSTRUCTION UNLESS A PROFESSIONAL SEAL AND SIGNATURE ARE ON THE DRAWING

THIS PLAN IS APPROVED ONLY FOR WORK AS INDICATED ON THE APPLICATION SPECIFICATION SHEET. ALL OTHER MATTERS SHOWN ARE NOT TO BE RELIED UPON, OR TO BE CONSIDERED AS EITHER BEING APPROVED OR IN ACCORDANCE WITH APPLICABLE CODES.

DOB STAMP & SIGNATURES

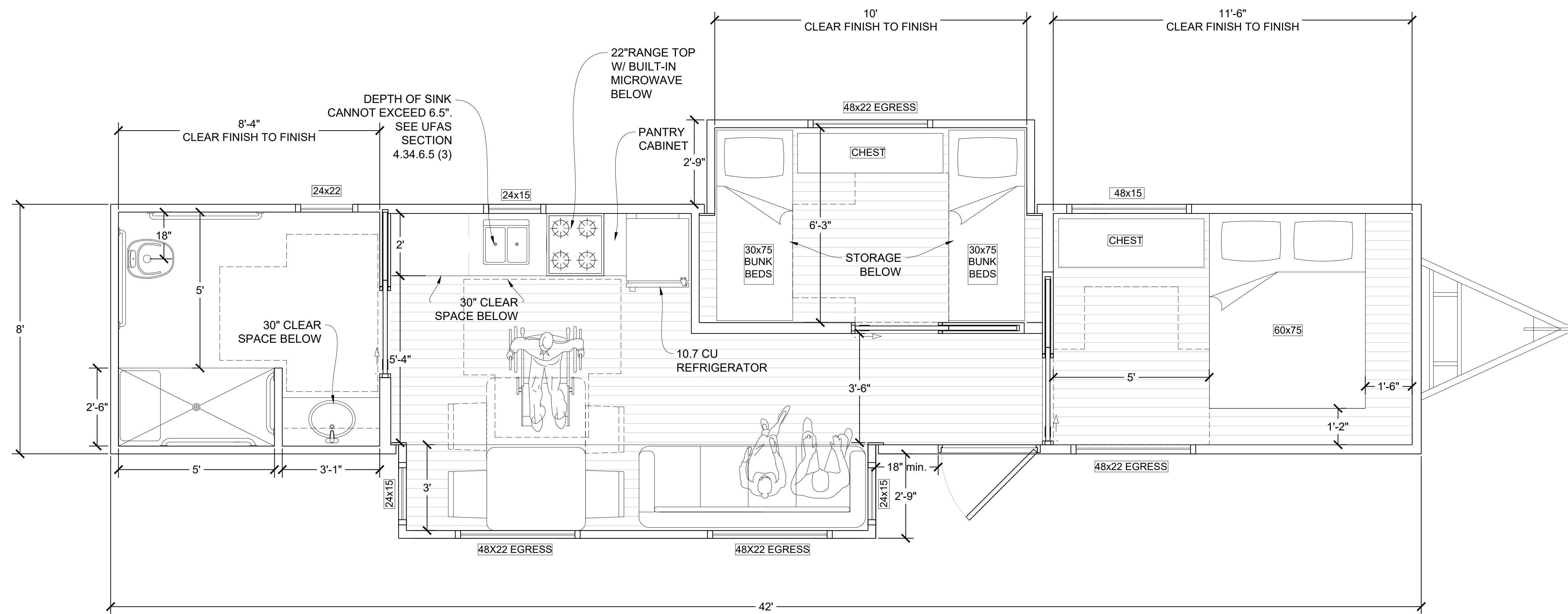
DOB SCAN

GENERAL NOTES:

REFER TO A-104 - A106 FOR BATHROOM LAYOUT DIMENSIONS

REFER TO A-107-A-109 FOR KITCHEN LAYOUT DIMENSION

RV MATTRESSES SIZES ASSUMED ARE AS FOLLOWS:
RV SHORT QUEEN 60X75 IN
RV SINGLE 30X75 IN



1 PLAN TWO BEDROOM UNIT (SLEEPS SIX) 96" CEILING
SCALE = 1/2"=1'-0"

PROJECT NAME:
FEMA TEMPORARY HOUSING UNITS

ADDRESS1
ADDRESS2
ADDRESS3

MARK	DATE	DESCRIPTION

PROJECT NO. _____ PROJECT CODE/NUMBER _____
FILE: _____ dg
DRAWN BY: _____ wsr
CHECKED BY: _____ wsr

PLANS

STAMP:

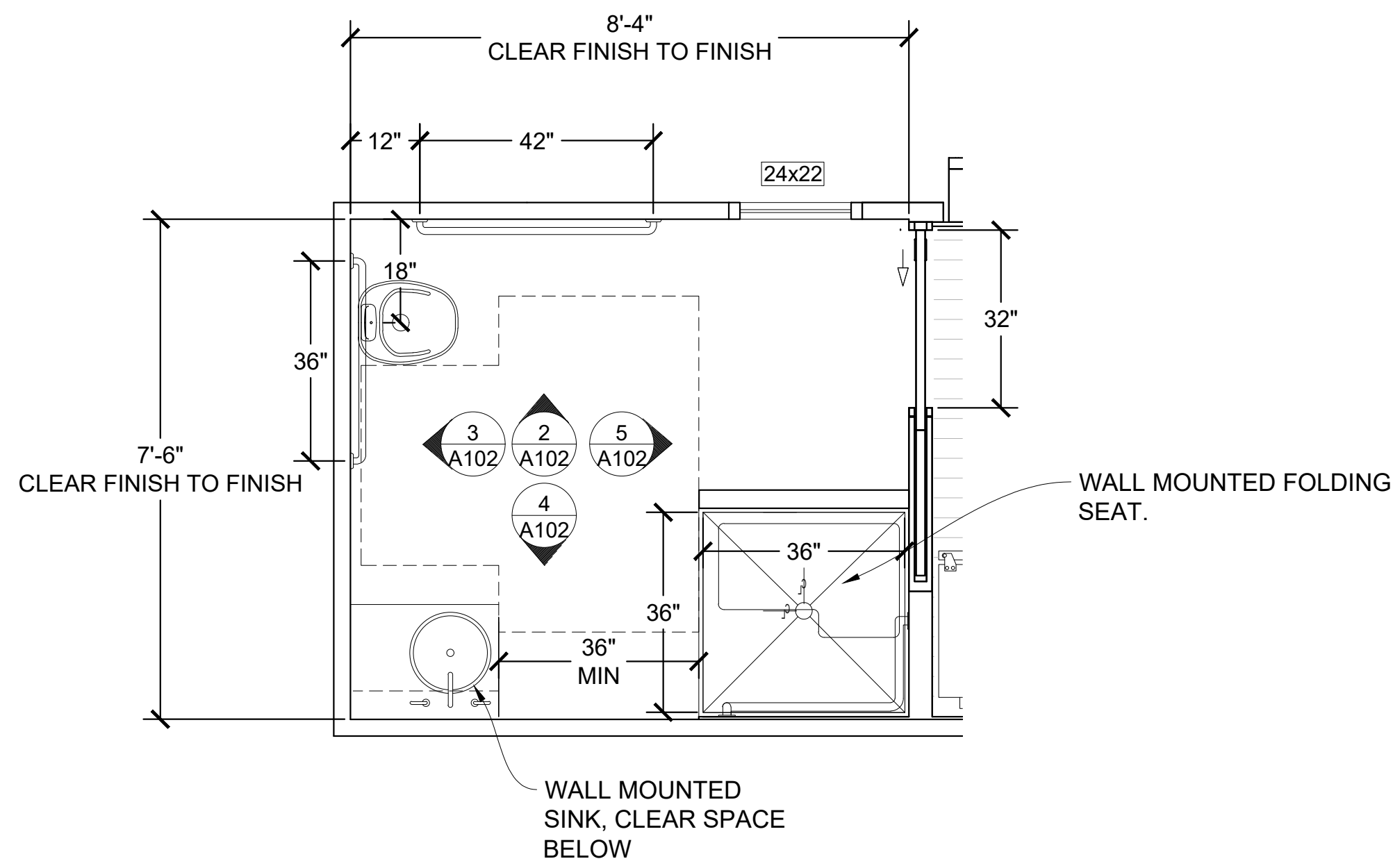
A-101

THIS DRAWING SHALL NOT BE USED FOR CONSTRUCTION UNLESS A PROFESSIONAL SEAL AND SIGNATURE ARE ON THE DRAWING

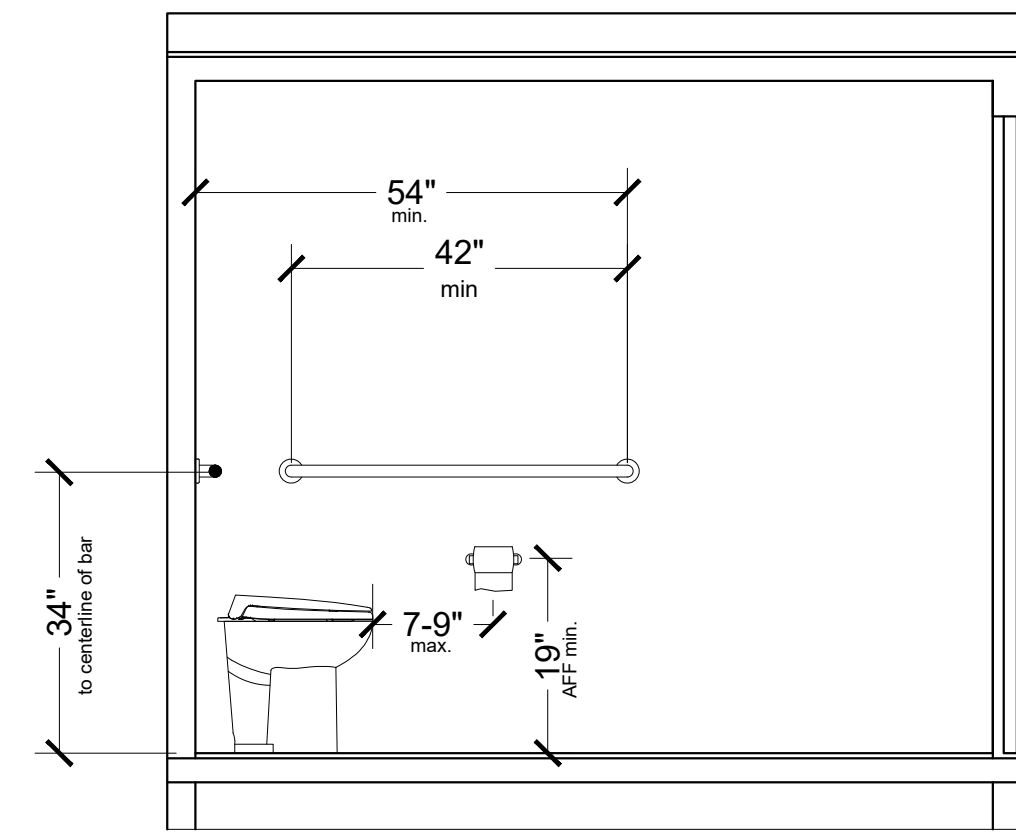
THIS PLAN IS APPROVED ONLY FOR WORK AS INDICATED ON THE APPLICATION SPECIFICATION SHEET. ALL OTHER MATTERS SHOWN ARE NOT TO BE RELIED UPON, OR TO BE CONSIDERED AS EITHER BEING APPROVED OR IN ACCORDANCE WITH APPLICABLE CODES.

DOB STAMP & SIGNATURES

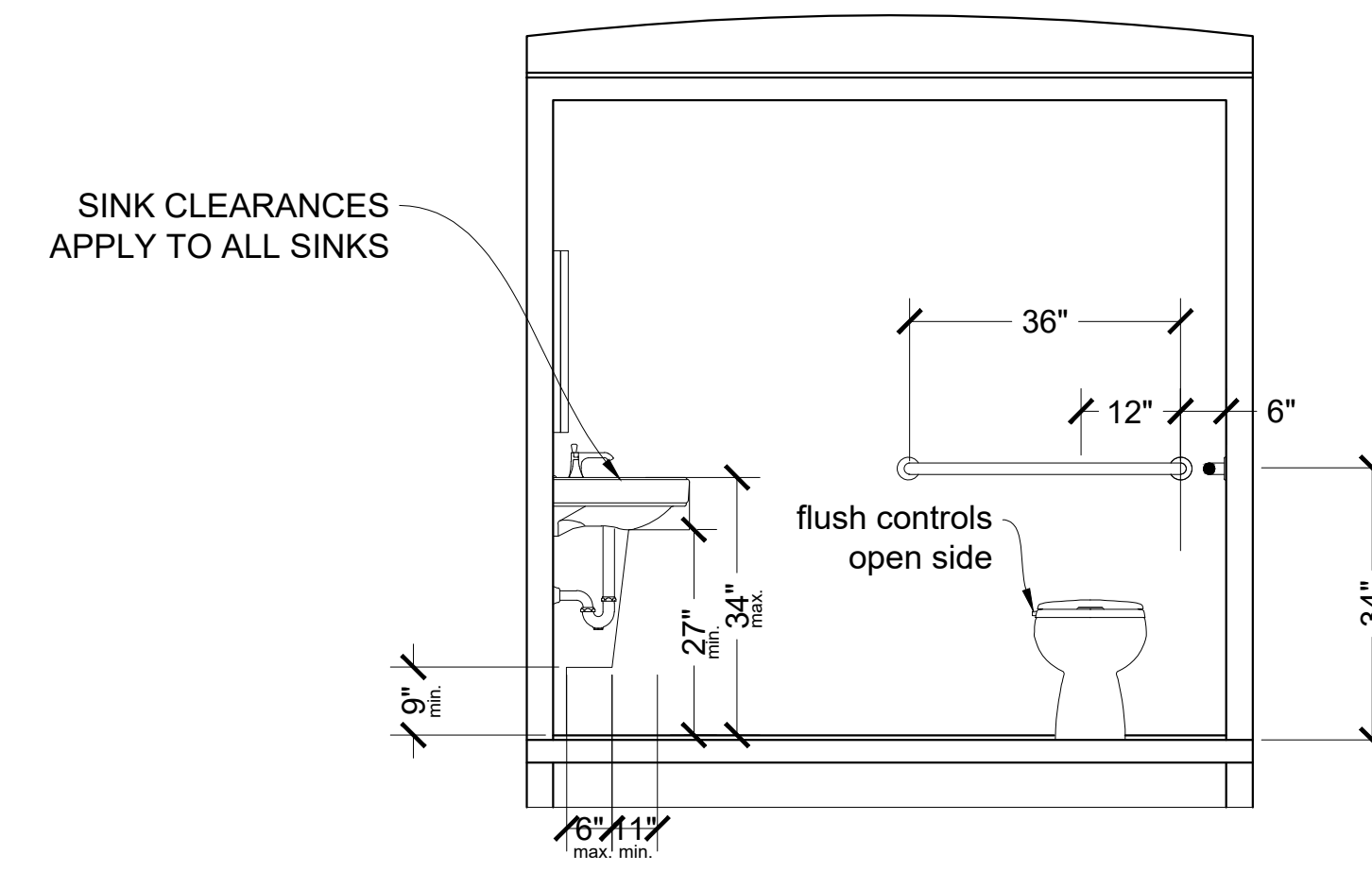
DOB SCAN



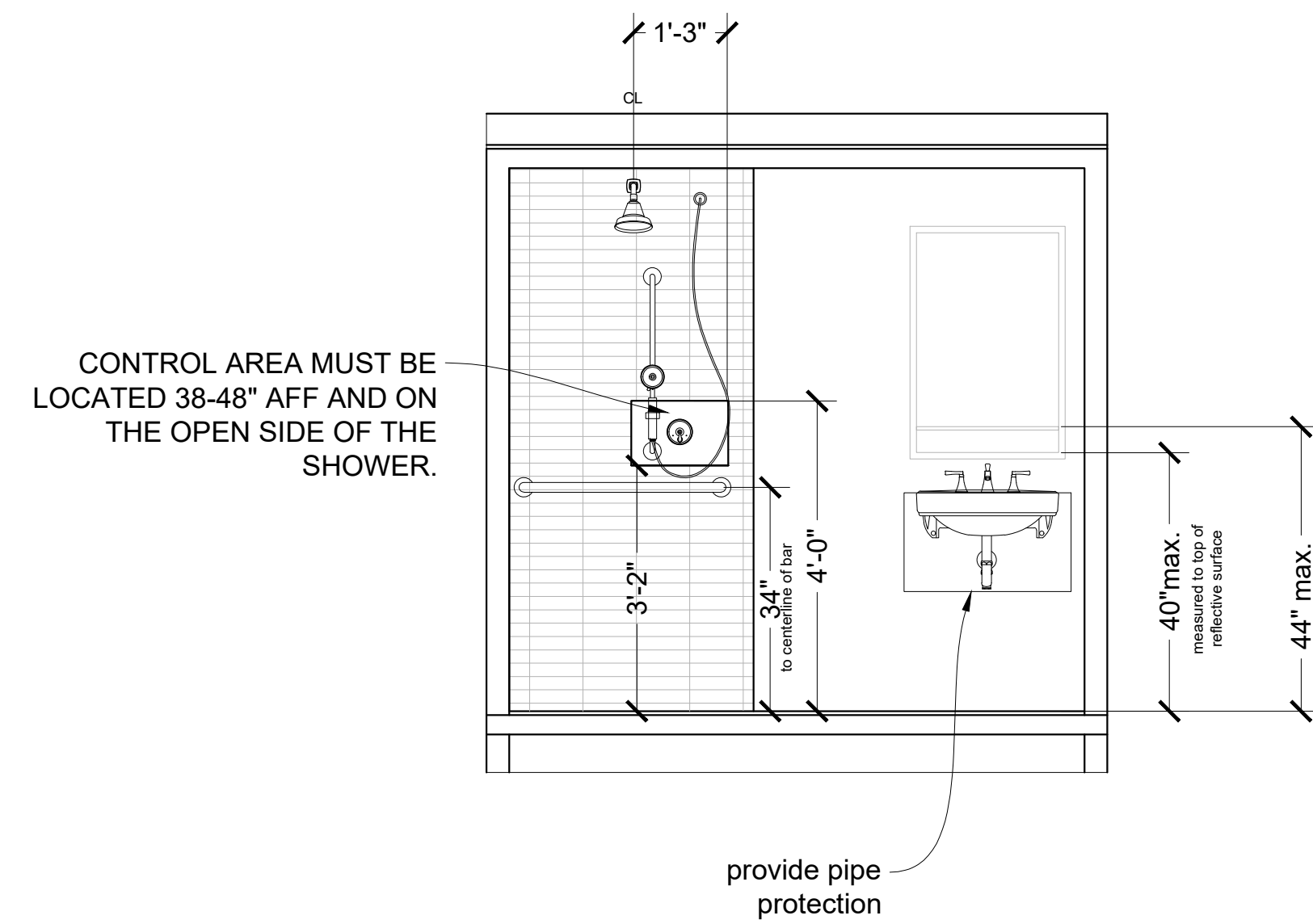
1 PLAN SHOWER BATHROOM
 SCALE = 1/2"=1'-0"



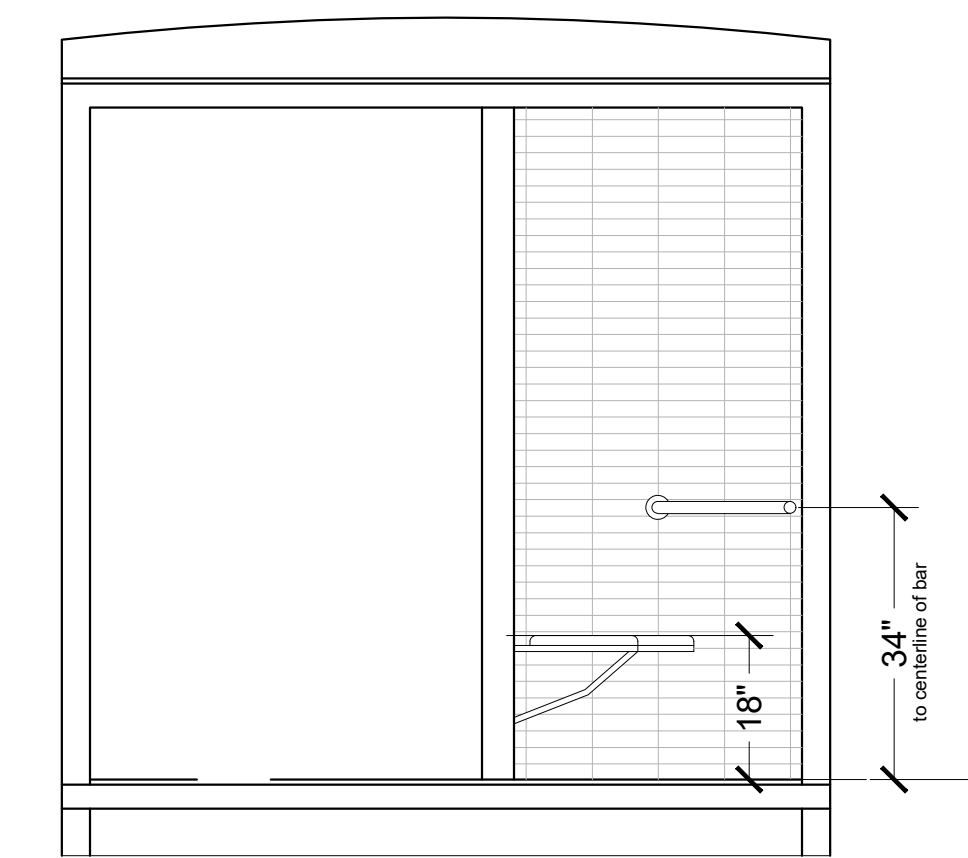
2 BATHROOM ELEVATION 1
 SCALE = 1/2"=1'-0"



3 BATHROOM ELEVATION 2
 SCALE = 1/2"=1'-0"



4 BATHROOM ELEVATION 3
 SCALE = 1/2"=1'-0"



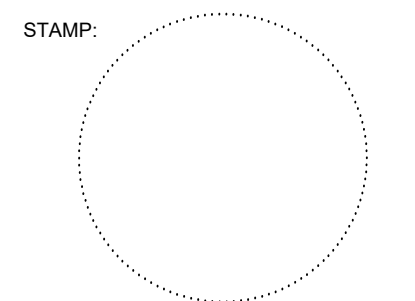
5 BATHROOM ELEVATION 4
 SCALE = 1/2"=1'-0"

PROJECT NAME:
FEMA TEMPORARY HOUSING UNITS

MARK	DATE	DESCRIPTION

PROJECT NO: PROJECT CODE/NUMBER
 FILE: dg
 DRAWN BY: wef
 CHECKED BY: wef

BATHROOM DETAILS



THIS DRAWING SHALL NOT BE USED FOR CONSTRUCTION UNLESS A PROFESSIONAL SEAL AND SIGNATURE ARE ON THE DRAWING

THIS PLAN IS APPROVED ONLY FOR WORK AS INDICATED ON THE APPLICATION SPECIFICATION SHEET. ALL OTHER MATTERS SHOWN ARE NOT TO BE RELIED UPON, OR TO BE CONSIDERED AS EITHER BEING APPROVED OR IN ACCORDANCE WITH APPLICABLE CODES.

DOB STAMP & SIGNATURES

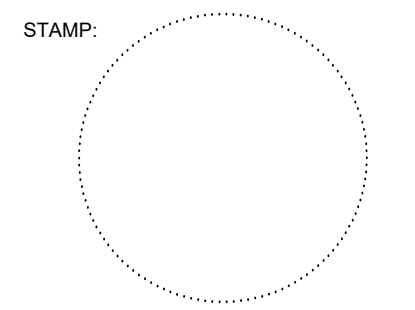
DOB SCAN

PROJECT NAME:
FEMA TEMPORARY HOUSING UNITS

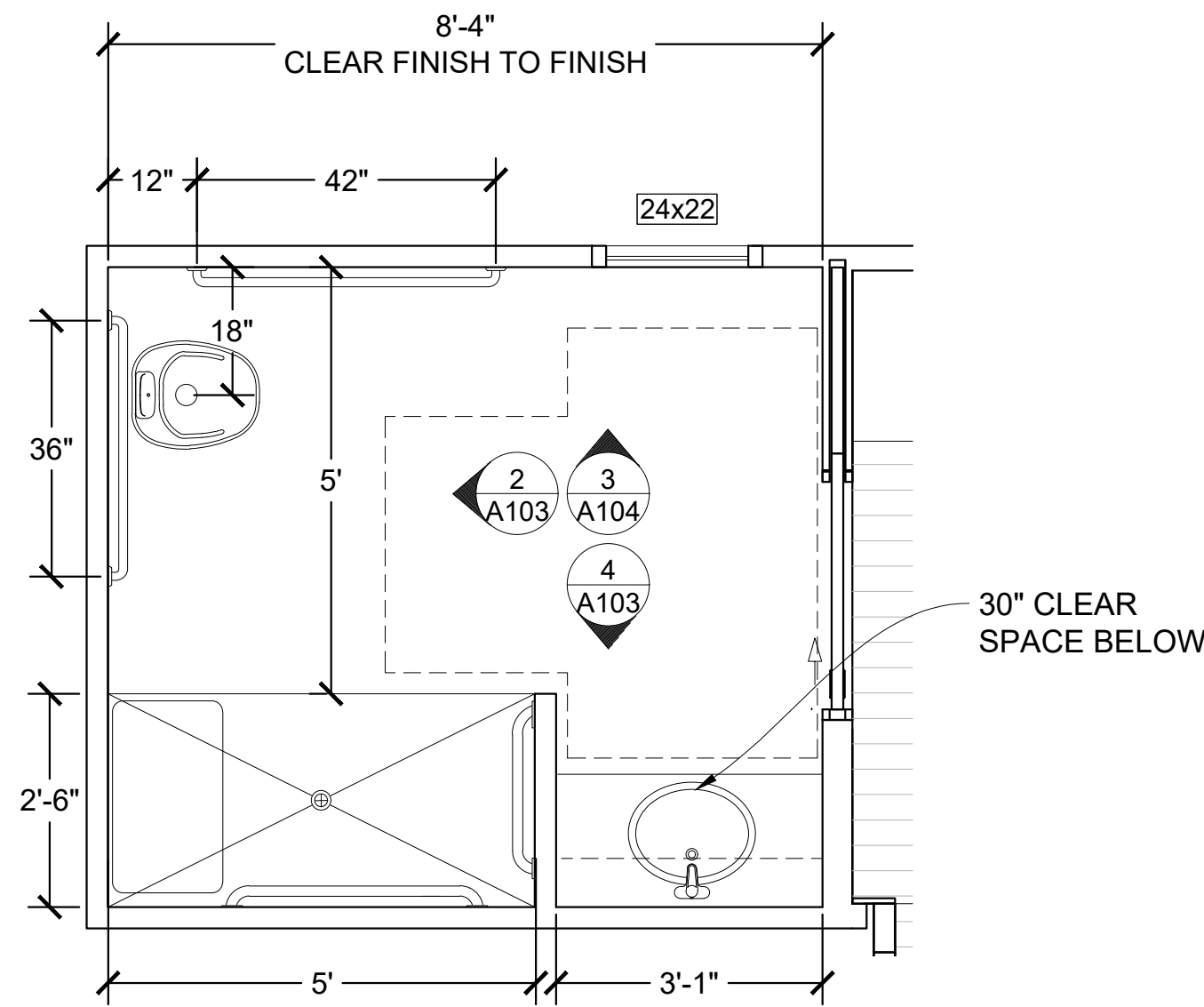
MARK	DATE	DESCRIPTION

PROJECT NO: PROJECT CODE/NUMBER
 FILE: dg
 DRAWN BY: wef
 CHECKED BY: wef

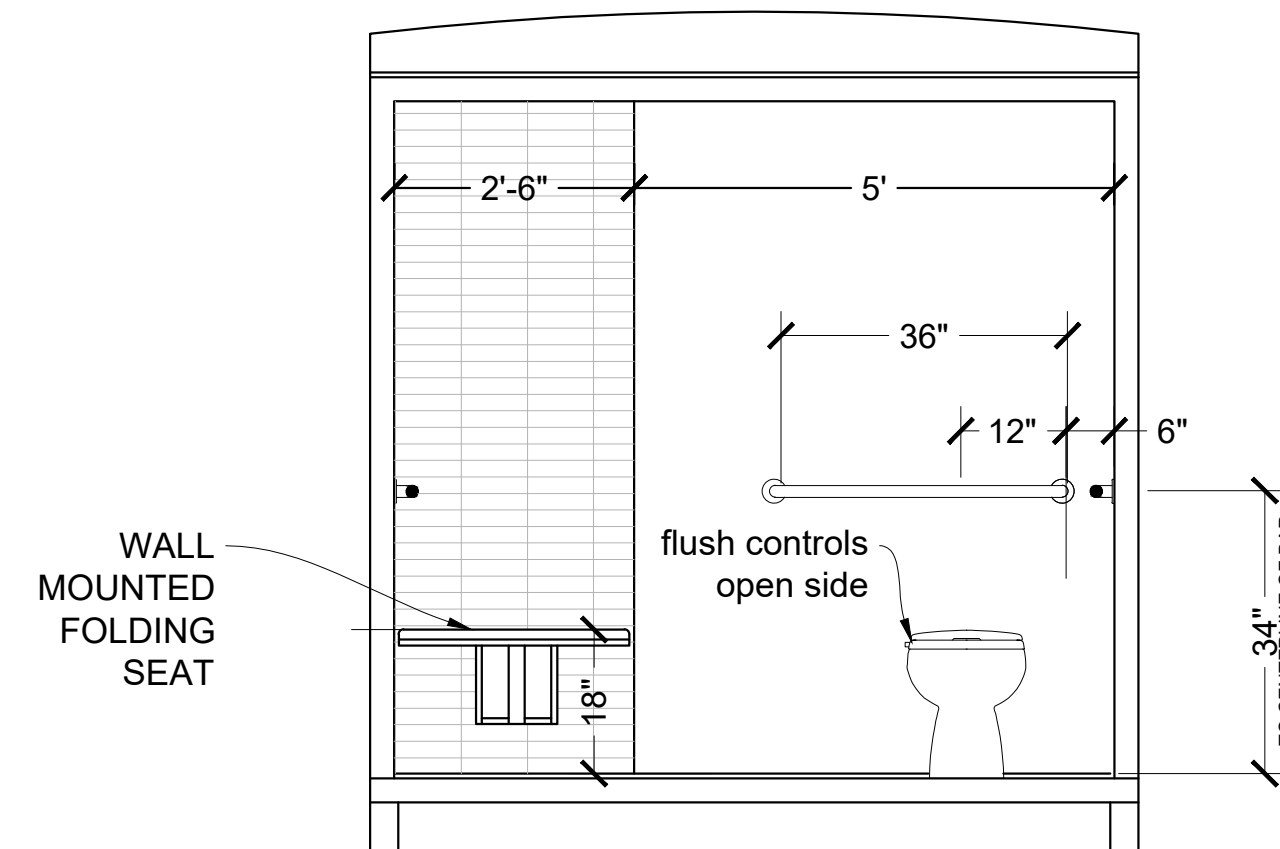
BATHROOM DETAILS



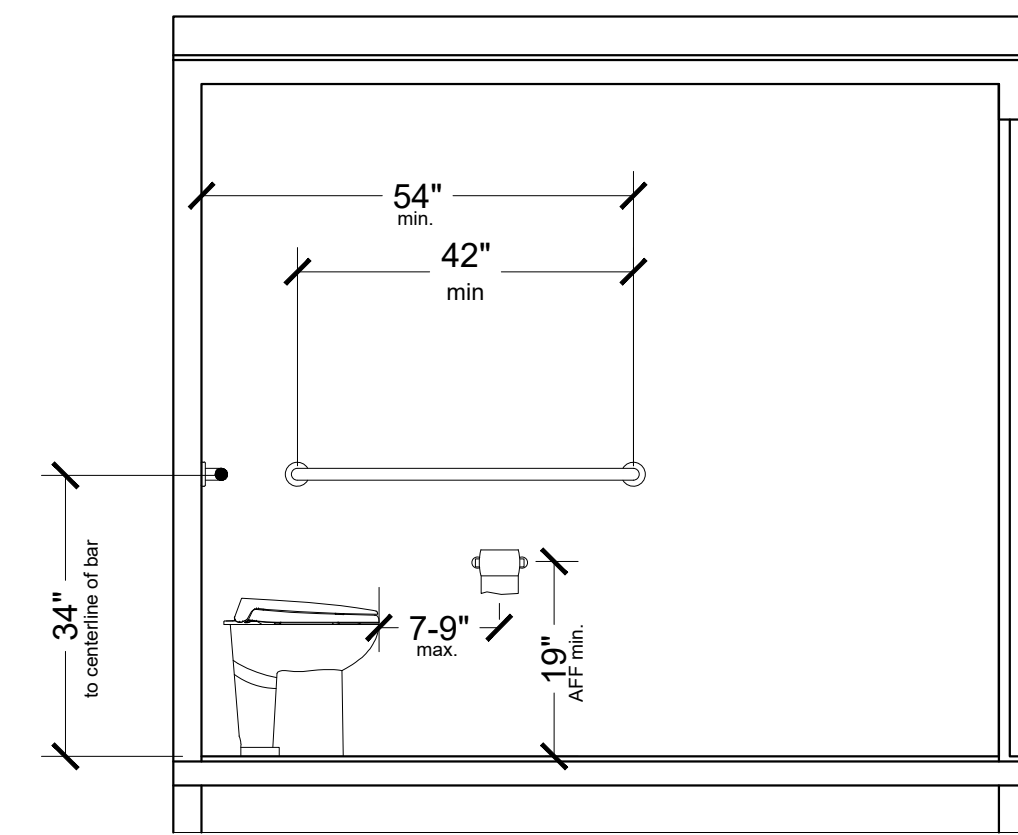
A-103



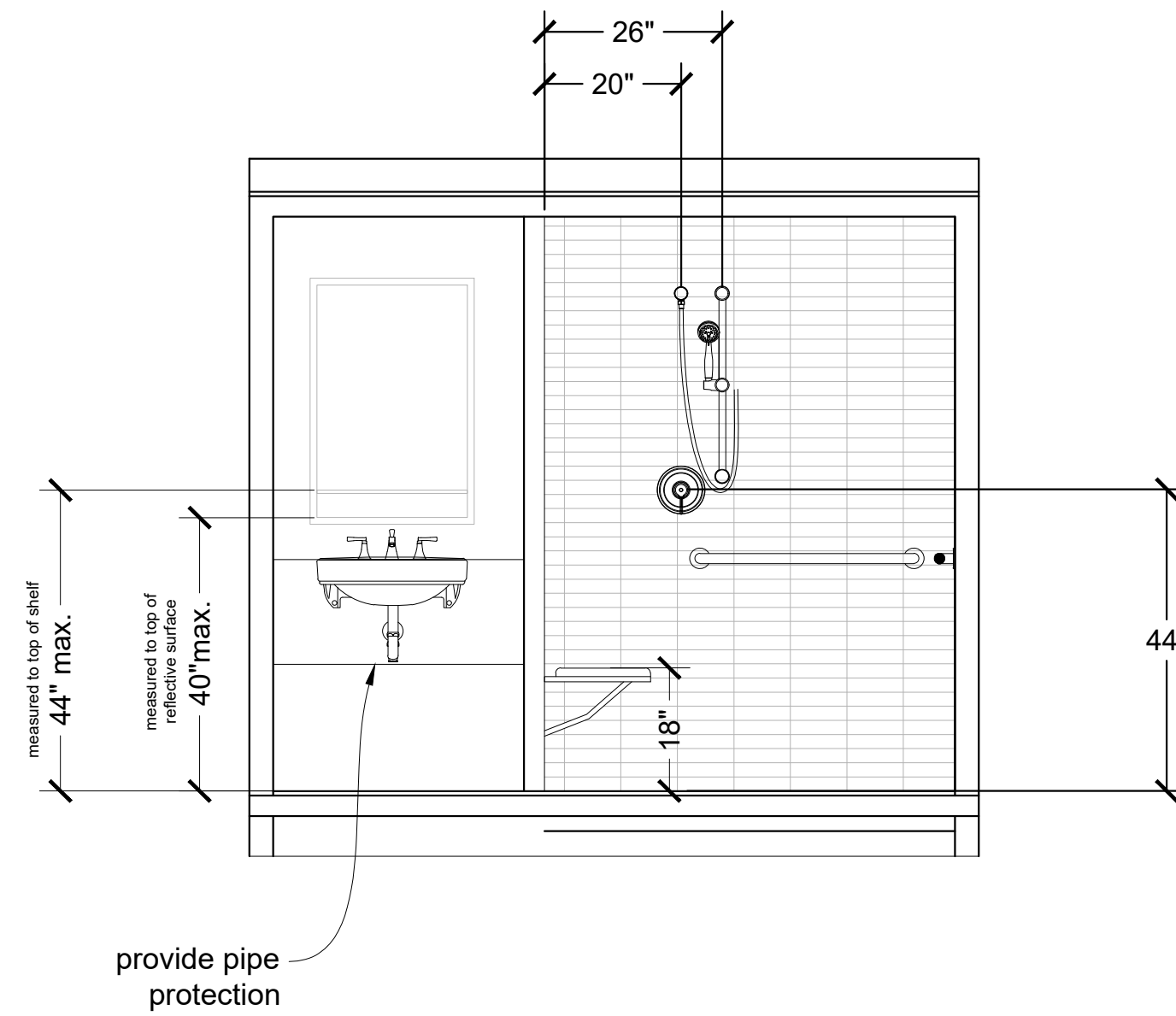
1 PLAN BATHROOM WITH ROLL IN SHOWER
 SCALE = 1/2"=1'-0"



2 BATHROOM ELEVATION 1
 SCALE = 1/2"=1'-0"



3 BATHROOM ELEVATION 2
 SCALE = 1/2"=1'-0"



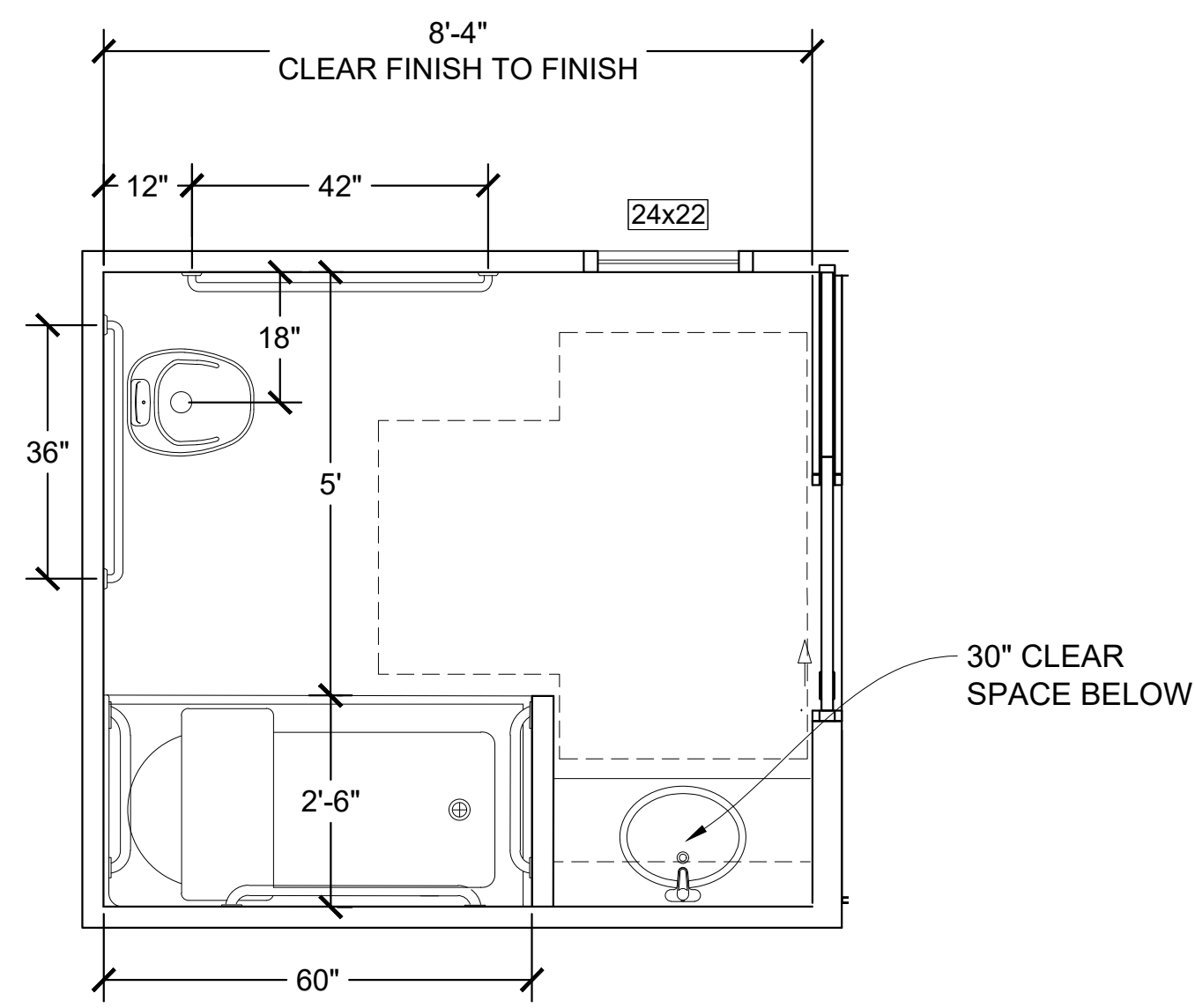
4 BATHROOM ELEVATION 3
 SCALE = 1/2"=1'-0"

THIS DRAWING SHALL NOT BE USED FOR CONSTRUCTION UNLESS A PROFESSIONAL SEAL AND SIGNATURE ARE ON THE DRAWING

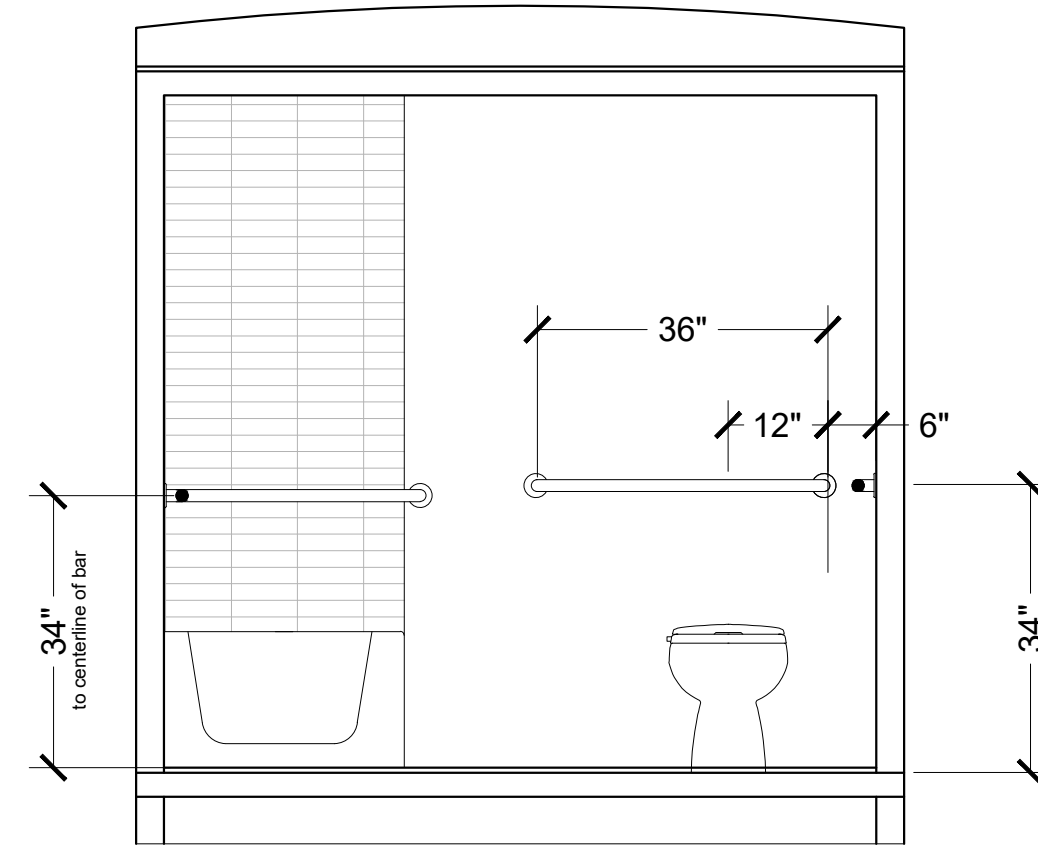
THIS PLAN IS APPROVED ONLY FOR WORK AS INDICATED ON THE APPLICATION SPECIFICATION SHEET. ALL OTHER MATTERS SHOWN ARE NOT TO BE RELIED UPON, OR TO BE CONSIDERED AS EITHER BEING APPROVED OR IN ACCORDANCE WITH APPLICABLE CODES.

DOB STAMP & SIGNATURES

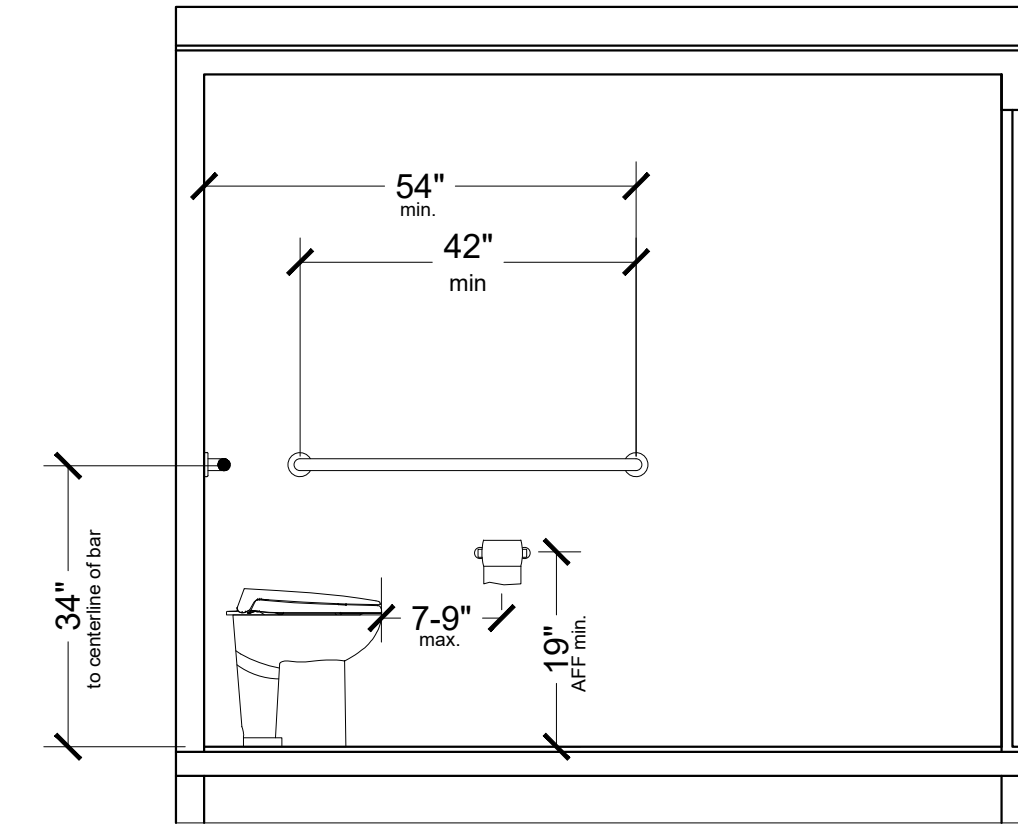
DOB SCAN



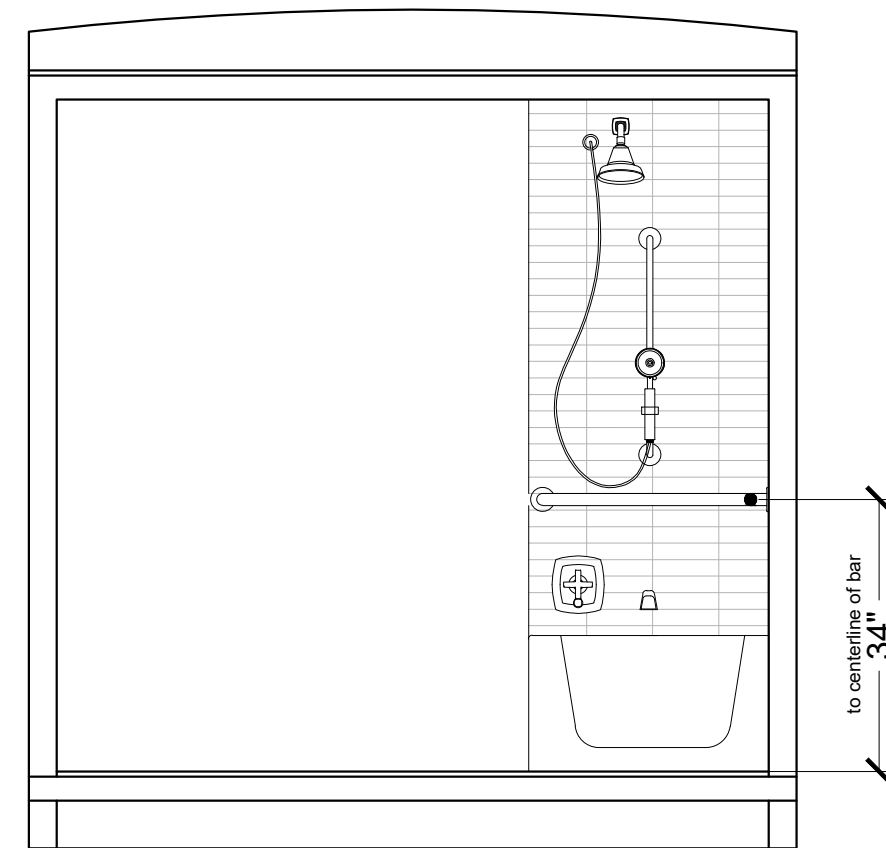
1 PLAN BATHROOM TUB
 SCALE = 1/2"=1'-0"



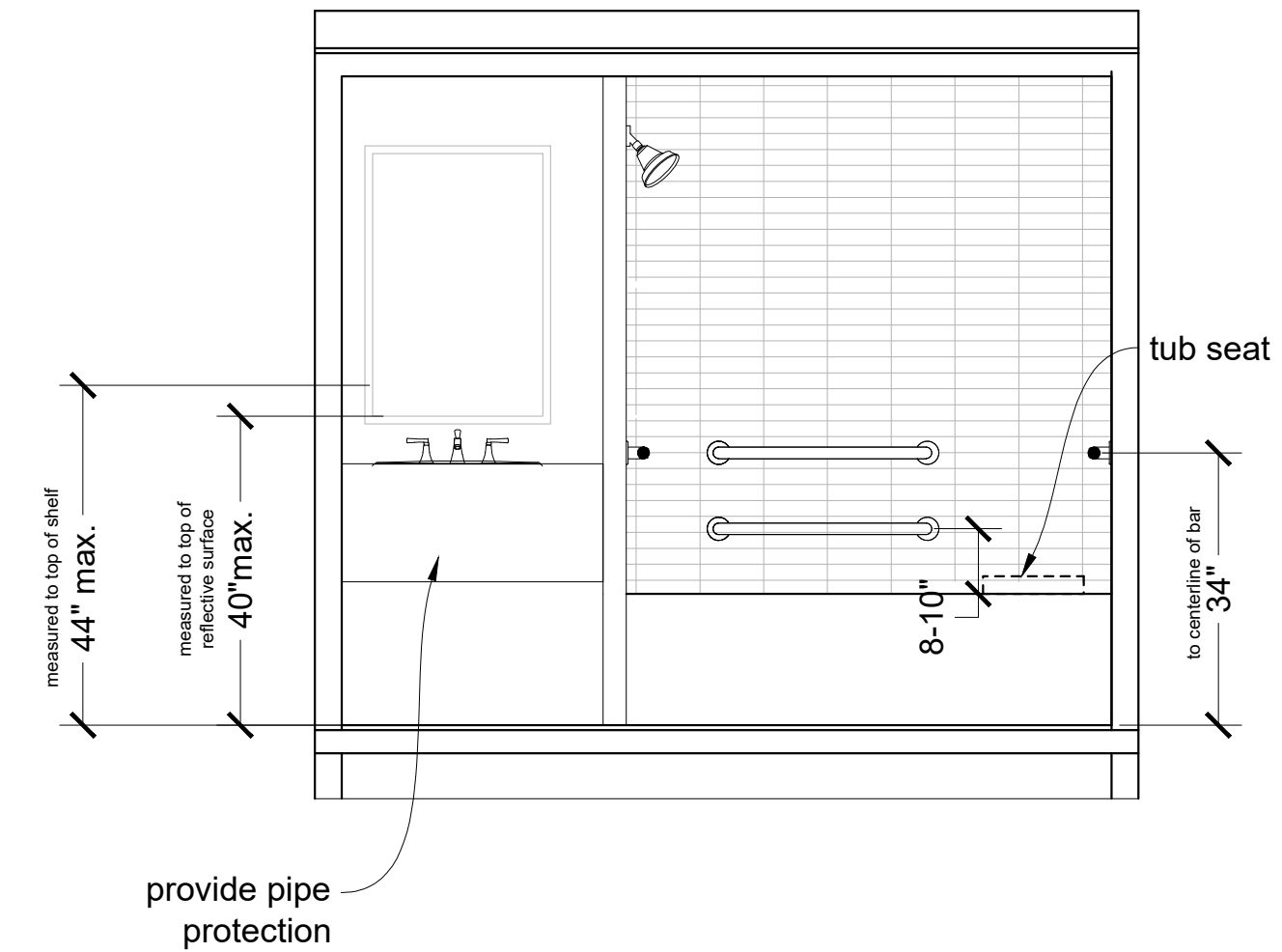
2 BATHROOM ELEVATION 1
 SCALE = 1/2"=1'-0"



3 BATHROOM ELEVATION 2
 SCALE = 1/2"=1'-0"



4 BATHROOM ELEVATION 3
 SCALE = 1/2"=1'-0"



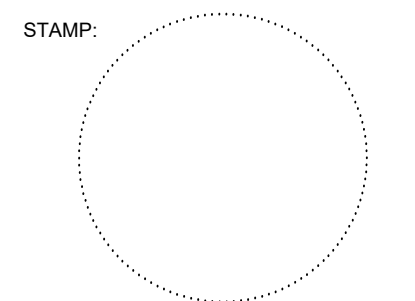
5 BATHROOM ELEVATION 4
 SCALE = 1/2"=1'-0"

PROJECT NAME:
FEMA TEMPORARY HOUSING UNITS

MARK	DATE	DESCRIPTION

PROJECT NO: PROJECT CODE/NUMBER
 FILE: dg
 DRAWN BY: wef
 CHECKED BY: wef

BATHROOM DETAILS



THIS DRAWING SHALL NOT BE USED FOR CONSTRUCTION UNLESS A PROFESSIONAL SEAL AND SIGNATURE ARE ON THE DRAWING

THIS PLAN IS APPROVED ONLY FOR WORK AS INDICATED ON THE APPLICATION SPECIFICATION SHEET. ALL OTHER MATTERS SHOWN ARE NOT TO BE RELIED UPON, OR TO BE CONSIDERED AS EITHER BEING APPROVED OR IN ACCORDANCE WITH APPLICABLE CODES.

DOB STAMP & SIGNATURES

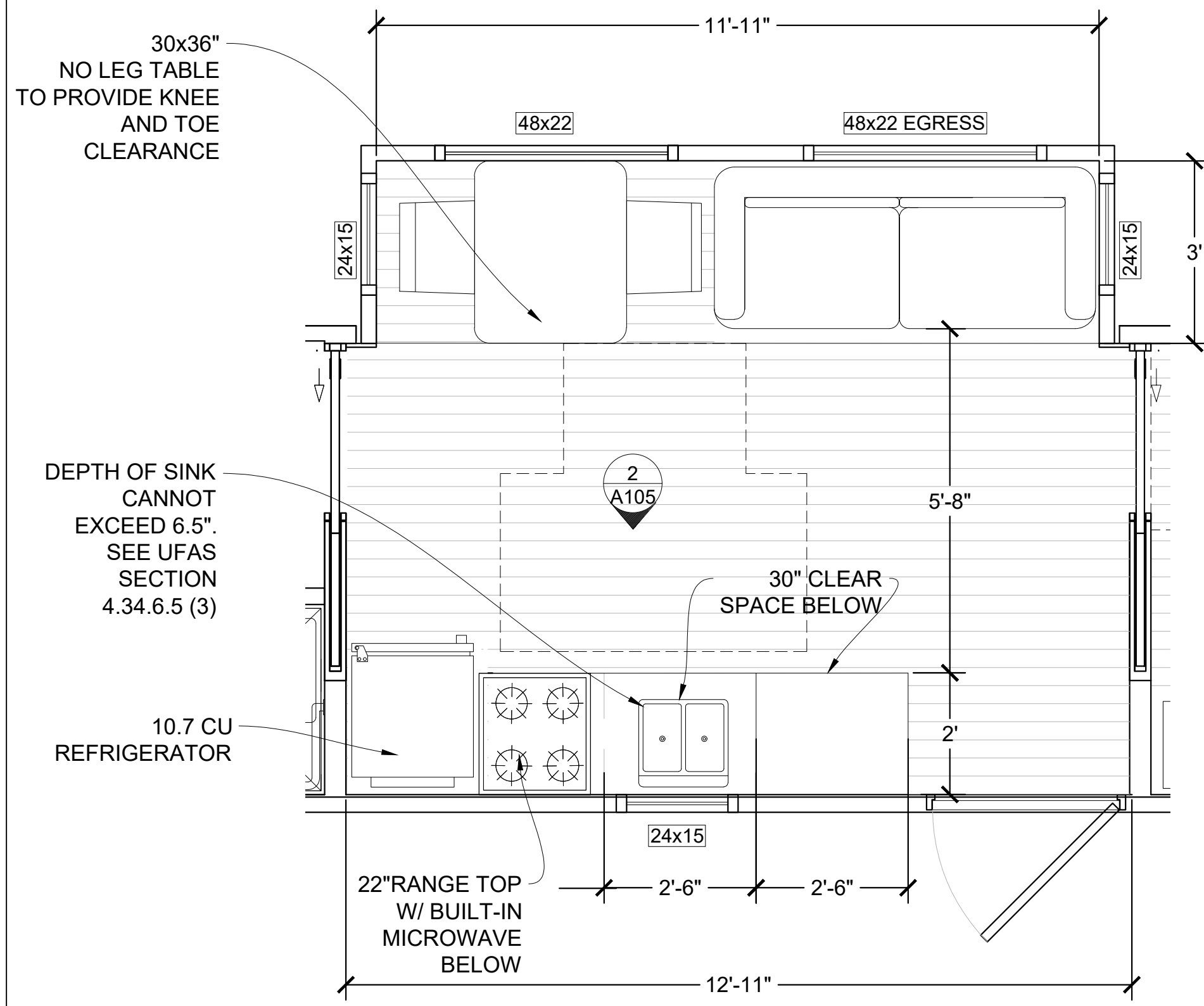
DOB SCAN

GENERAL NOTES:

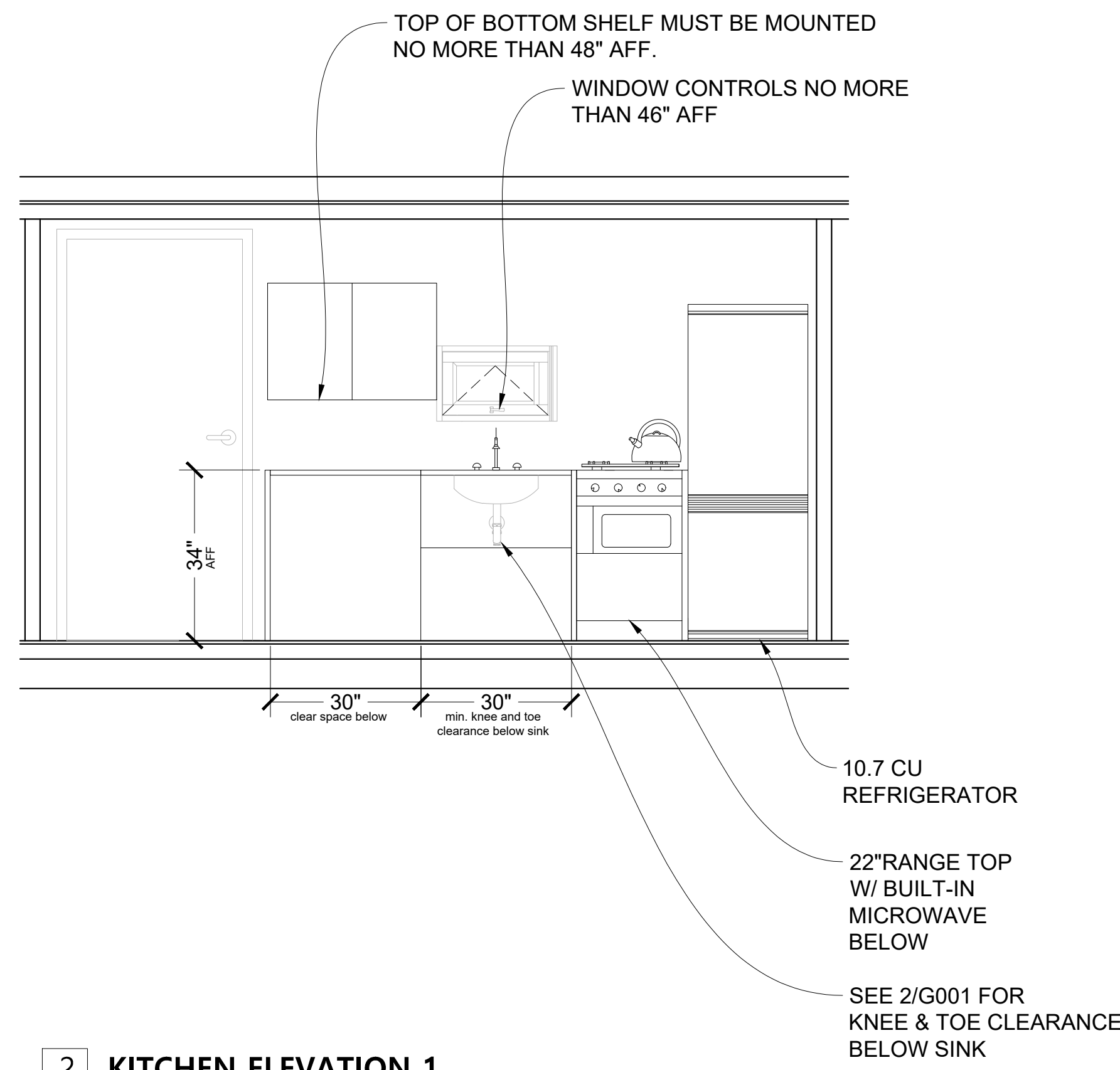
DEPTH OF SINKS CANNOT EXCEED 6.5". SEE UFAS SECTION 4.34.6.5 (3)

CANNOT REACH OVER BURNERS TO OPERATE CONTROLS OF RANGE.

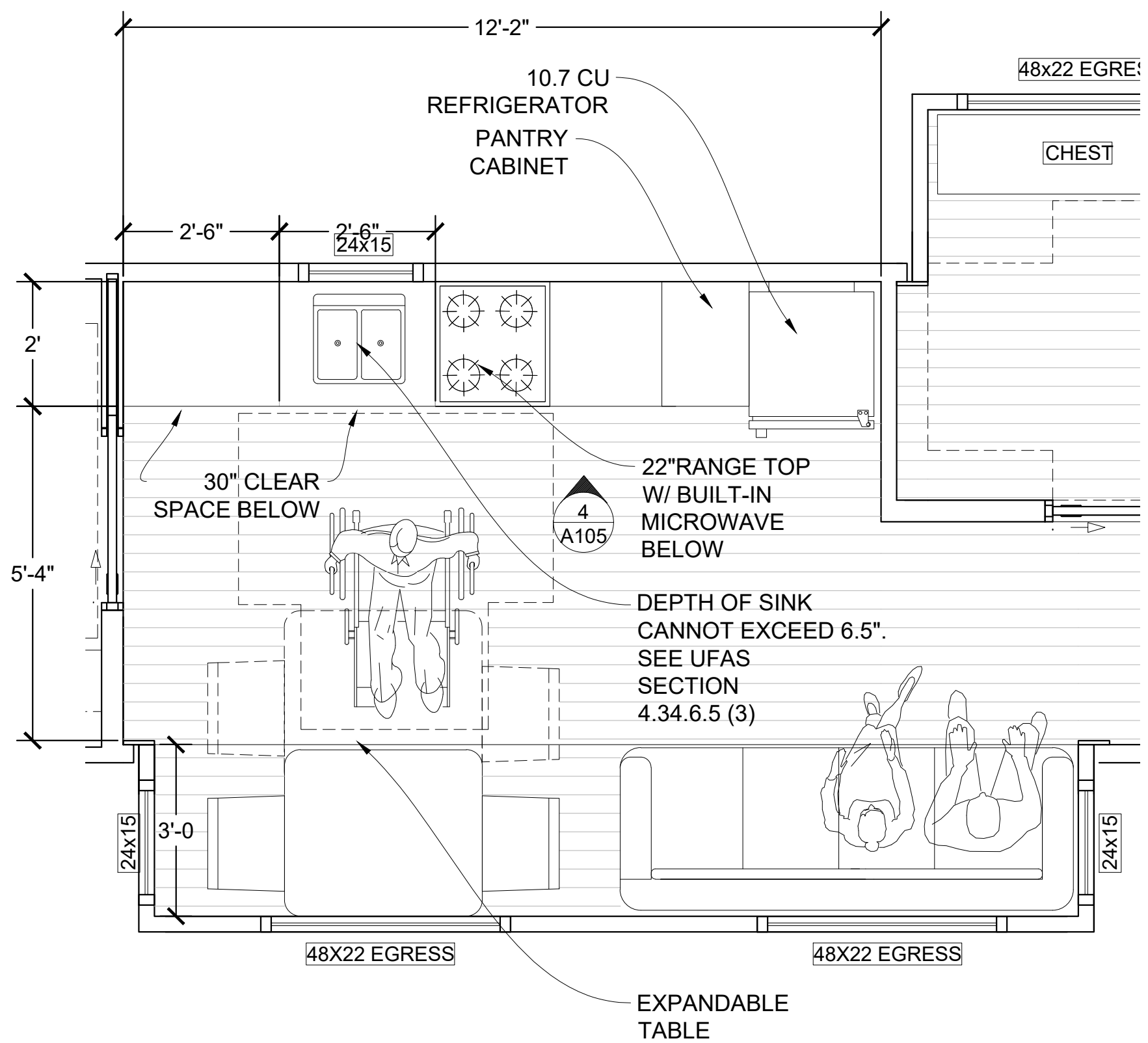
50% OF FREEZER SPACE MUST BE 54" ABOVE FINISHED FLOOR. 100% OF THE REFRIGERATOR SPACE AND CONTROL MUST BE MOUNTED BELOW 54" AFF.



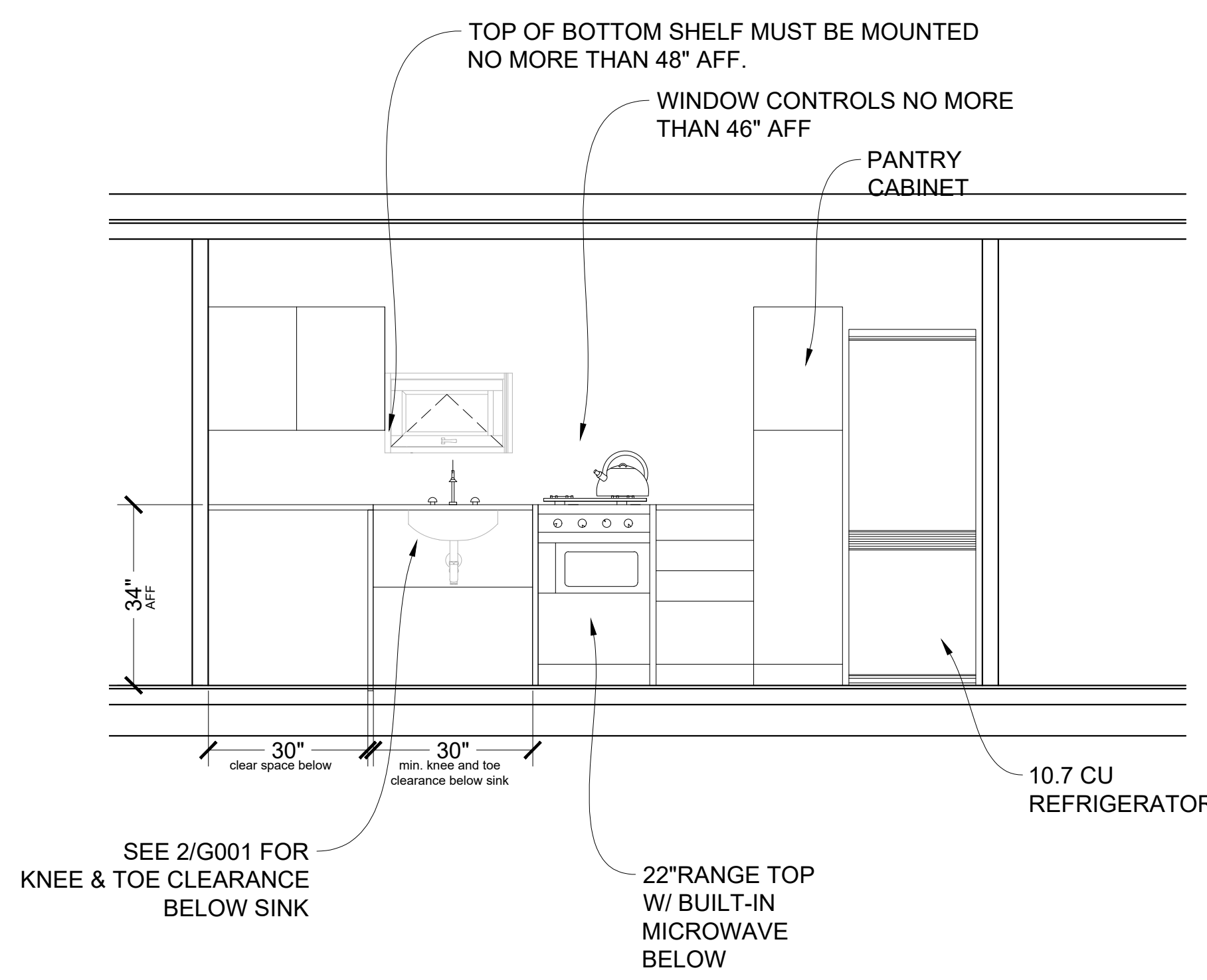
1 KITCHEN PLAN
 SCALE = 1/2"=1'-0"



2 KITCHEN ELEVATION 1
 SCALE = 1/2"=1'-0"



3 KITCHEN PLAN
 SCALE = 1/2"=1'-0"



4 KITCHEN ELEVATION 1
 SCALE = 1/2"=1'-0"

FEMA TEMPORARY HOUSING UNITS

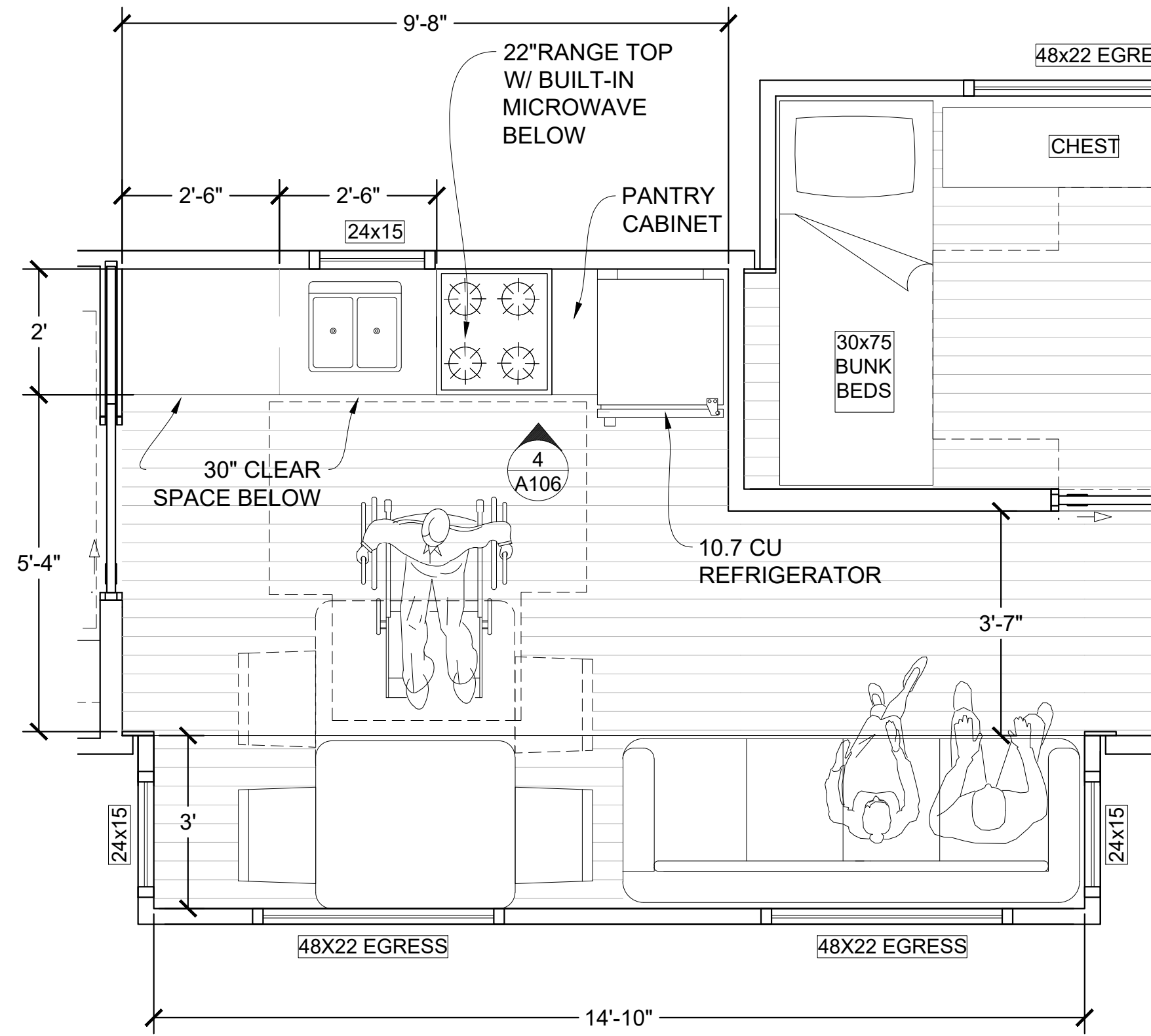
MARK	DATE	DESCRIPTION

PROJECT NO: PROJECT CODE/NUMBER
 FILE: dg
 DRAWN BY: wef
 CHECKED BY: wef

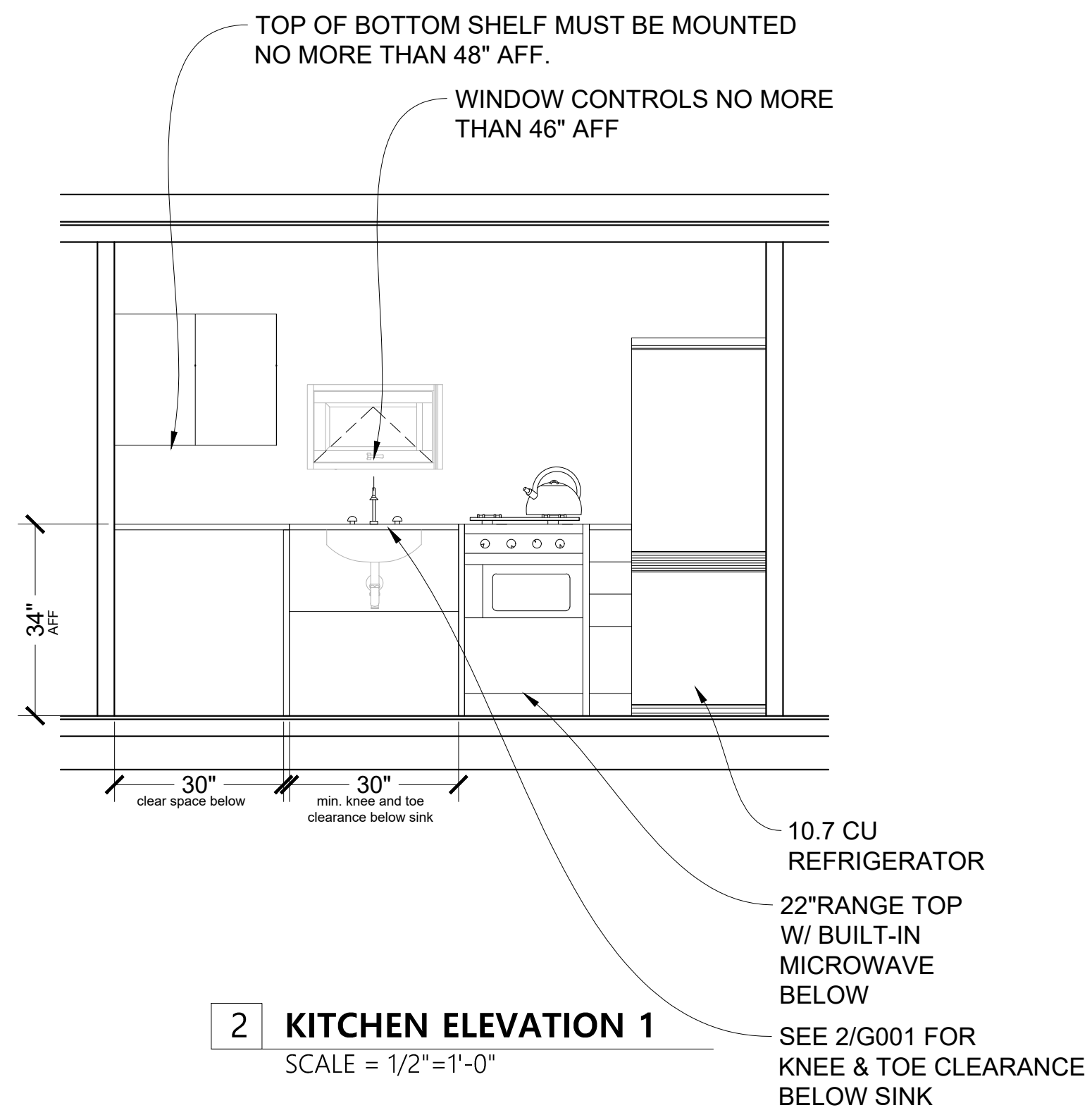
KITCHEN DETAILS

STAMP:

A-105



1 KITCHEN PLAN
SCALE = 1/2"=1'-0"



GENERAL NOTES:

DEPTH OF SINKS CANNOT EXCEED 6.5". SEE UFAS SECTION 4.34.6.5 (3)

CANNOT REACH OVER BURNERS TO OPERATE CONTROLS OF RANGE.

50% OF FREEZER SPACE MUST BE 54" ABOVE FINISHED FLOOR. 100% OF THE REFRIGERATOR SPACE AND CONTROL MUST BE MOUNTED BELOW 54" AFF.

Steven Winter Associates, Inc.

307 Seventh Avenue, Suite 1701
New York, NY 10001
Office: (212) 564-5800
Fax: (212) 246-3533
web: www.swinter.com

THIS DRAWING SHALL NOT BE USED FOR CONSTRUCTION UNLESS A PROFESSIONAL SEAL AND SIGNATURE ARE ON THE DRAWING

THIS PLAN IS APPROVED ONLY FOR WORK AS INDICATED ON THE APPLICATION SPECIFICATION SHEET. ALL OTHER MATTERS SHOWN ARE NOT TO BE RELIED UPON, OR TO BE CONSIDERED AS EITHER BEING APPROVED OR IN ACCORDANCE WITH APPLICABLE CODES.

DOB STAMP & SIGNATURES

DOB SCAN

FEMA TEMPORARY HOUSING UNITS

MARK	DATE	DESCRIPTION

PROJECT NO: PROJECT CODE/NUMBER
FILE: dg
DRAWN BY: wef
CHECKED BY: wef

KITCHEN DETAILS

STAMP:

A-106